

Window reveal beads with fibreglass mesh for an expansion joint between the insulation system and window frames or other adjacent structures.



Item number	Name	Length	Package
1650400072	Window reveal bead – 6 mm with mesh	1.4 m	50 pcs
1650400068	Window reveal bead – 6 mm with mesh	1.6 m	50 pcs
1650400039	Window reveal bead – 6 mm with mesh	2.4 m	50 pcs
1650400041	Window reveal bead – 9 mm with mesh	2.4 m	20 pcs
1650400176	Window reveal bead – 9 mm with mesh	2.4 m	50 pcs

MATERIAL

Plastic beads:

The window reveal beads are made from high-quality, tough PVC that is highly resistant to alkalis and UV radiation. PVC does not contain lead-based stabilisers. The side where the bead is connected to the window frame contains 4-mm thick, double-sided, closed cell foam tape. The bead also contains a tear-away strip with adhesive tape for holding the protective PE film in place.

Mesh:

The beads include 145 g/m² reinforcing fibreglass mesh with a width of 100 mm. The fibreglass mesh and PVC bead are connected by coextrusion.

USES AND ADVANTAGES

The connection of the plaster with window frames, and an aesthetically perfect finish, prevent the formation of cracks. The tear-away strip with adhesive tape for the protective film prevents damage and dirt from getting on the frame or glass.

Additional advantages of the window reveal bead:

- creates an expansion joint between the surface of the insulation system and the adjacent structure (e.g. window frames)
- creates an aesthetic finish on thin-layer plaster
- suitable for all types of thin-layer plasters
- enables installation of protective film
- eliminates the need for additional sealing of joints between the plaster and the adjacent window frame

INSTRUCTIONS FOR WINDOW REVEAL BEAD INSTALLATION

First, take the protective film off the window frame and remove any remaining dirt, grease, remains of the adhesive layer of the protective film and moisture. Shorten the bead to the required length, remove the protective film from the foam tape and stick the bead on the frame. Keep in mind that the adhesive on the foam tape only reaches full adhesion after about 24 hours. The bead is attached to the window frame in the place where the lintel and lining will be, usually before the thermal insulation layer is installed. The beads are joined in corners by cutting them at a 45° angle and putting the cut ends together. The bead must be attached to the window frame in such a way that ensures that the deviation of the unevenness of the final lining and lintel surface does not exceed the value corresponding to the maximum grain size increased by 0.5 mm. After removing the liner, attach the protective film to the tear-away strip; it will protect the window frame to a limited extent from damage and contamination during the installation of the ETICS system. After this, the base layer is applied and the final surface treatment is carried out according to the instructions of the ETICS system manufacturer. Break off the tear-away strip and remove the protective film from the window immediately after the final surface treatment.

ATTENTION

In corners (where the lintel and lining meet), the base layer must be reinforced with fibreglass mesh that extends at least 100 mm into the lining and lintel. Another

WINDOW REVEAL BEAD WITH MESH

Table 1 Suitable use of the window reveal bead

Thickness of insulation layer	Size of opening					
	Insulation in axis of original supporting structure		Insulation in face of supporting structure		Insulation in front of supporting structure	
	≤2 m ²	≤2–10 m ²	≤2 m ²	≤2–10 m ²	≤2 m ²	≤2–10 m ²
≤100m	1D	2D ¹⁾	2D ¹⁾	2D ¹⁾	2D ¹⁾	2D ¹⁾
≤160m	2D ¹⁾	2D ¹⁾	2D ¹⁾	2D ¹⁾	2D ¹⁾	2D ¹⁾
≤300m	3D ²⁾	3D ²⁾	3D ²⁾	3D ²⁾	3D ²⁾	3D ²⁾

Note:

¹⁾ window reveal bead with two-dimensional movement

²⁾ window reveal bead with three-dimensional movement

solution for reinforcing the corner between the lintel and the lining, or the lining and the window sill, is the use of a system 3D reinforcing corner made of fibreglass mesh. After the protective PE film is placed on the window reveal bead, wind may cause it to partially detach from the window frame. We therefore recommend checking the attachment of the bead to the window before laying the base layer, as it will not be possible to additionally attach the bead to the substrate after the base layer and plaster are finished.

The air temperature for installation of the bead should be between 5°C and 30°C.

The operating temperature range after installation is 30°C to 80°C.

In terms of flexibility, the window reveal bead is in class 1D. Classes 2D and 3D may be more suitable for certain applications, see Table 1.

CONDITIONS OF USE

The window reveal bead must not be installed at air temperatures and surface temperatures below 5°C and above 30°C. Throughout the installation until the curing of the final surface finish, the bead must be protected from direct sunlight and direct weather effects.

PACKAGING AND STORAGE

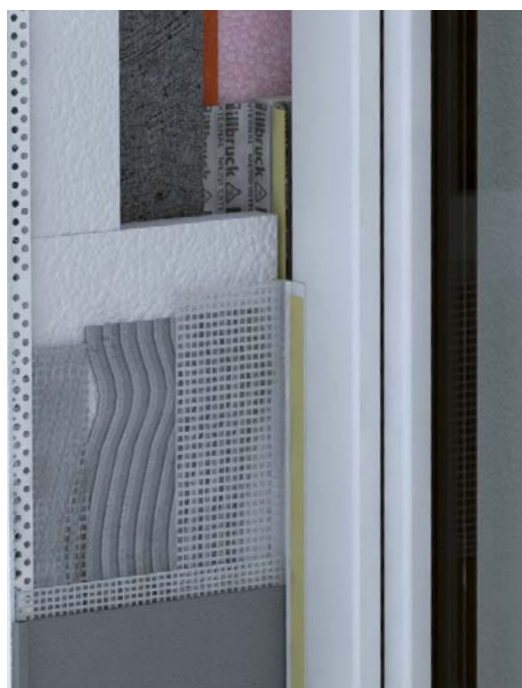
Packaged in a paper box. Until installation, the product must be stored in a dry covered place at temperatures ranging from 5°C to 30°C in a horizontal position.

COLOUR VARIANTS

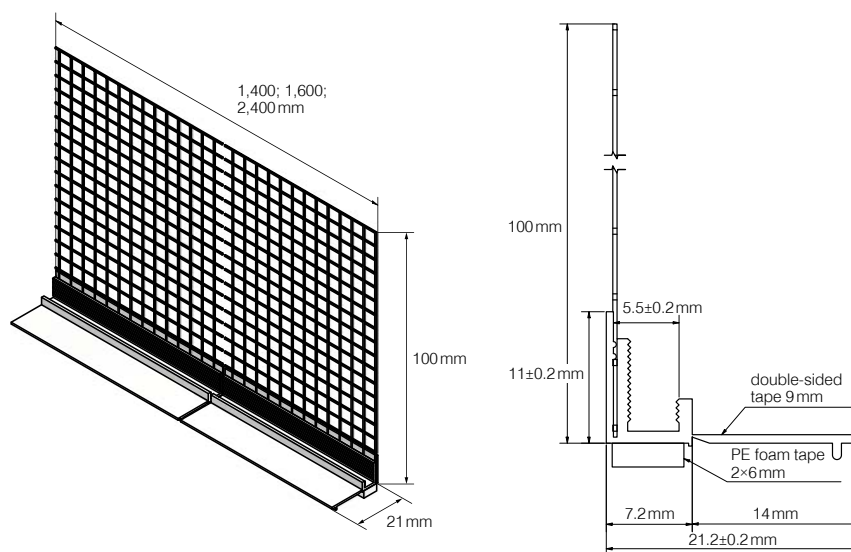
Beige brown – RAL 8024

Anthracite gray – RAL 7016

Mouse gray – RAL 7005



Bead length	Plaster thickness	Mesh width	Dimensions of PE foam tape	Double-sided tape
1,400; 1,600; 2,400 mm	6 and 9 mm	100 mm	2×6 mm	9 mm



REGISTERED OFFICE: RETEK s.r.o.
Tiskařská 257/10
108 00 Praha 10
Czech Republic

PRODUCTION: RETEK s.r.o.
U Nádraží 140
751 21 Prosenice
Czech Republic

www.retek.cz